

20
23



THE RELIGIOUS COALITION FOR EMERGENCY HUMAN NEEDS
REPORT *to the* **COMMUNITY**
2023

www.rcehn.org

FISCAL YEAR OCTOBER 1, 2022 - SEPTEMBER 30, 2023



WHO WE ARE:

In 1981, the leaders of our community recognized the need for assistance to those undergoing hardships and struggles. They urged local faith congregations to address the issue of homelessness in Frederick County. Responding to the call, these congregations formed The Religious Coalition. Today, after more than four decades, The Religious Coalition remains the primary resource for people in Frederick County who are experiencing homelessness and poverty.

DEAR FRIENDS,

“Change is inevitable, growth is optional” -John Maxwell.

As we close another fiscal year in the history of the Religious Coalition this quote stands out to me. We’ve faced continual change over the years with more transition on the horizon, but have we grown? Do we coexist with the status quo, or do we reach out to where our comfort zones end and truly grow as an organization?

The Coalition has experienced incredible growth due to the rising needs of our community. Once known exclusively for emergency shelter services, our efforts to prevent and alleviate the effects of poverty in Frederick County have since expanded into financial assistance and support for rental, utility, and healthcare costs.

We know the demand for our services continues to grow. Increasing rents, higher interest rates, and the increased expense of daily essentials have caused a wave of housing instability for our most vulnerable populations. The inventory of “affordable housing” is scarce and residents in Frederick County are being priced out of the housing market.

But why should this matter to you? Well, the why is easy. It is because your grandparents or your parents, your friends or siblings, or your children, may become vulnerable to losing their housing stability. In many cases, it takes just one financial emergency to undo years of planning for a future that now looks quite different. And when that need becomes present, where do they go for help?

The answer is The Religious Coalition. We are positioned like no other nonprofit in our community to directly impact and ultimately remove common barriers to housing stability and personal prosperity. We believe our most at-risk neighbors deserve a chance to thrive, regardless of their circumstances.

And as our services continue to evolve, so does the imperative need for support. We can only reach those impacted by the effects of poverty if we partner with those similarly committed to transforming our community through services that meet the rising needs our community faces.

We are grateful to our donors and volunteers who are committed to our mission, and proud that you continue to walk and grow with us.

Be well friends,



Nick Brown
Executive Director



THE RELIGIOUS COALITION SENIOR STAFF

Nick Brown, Executive Director

Catherine Dorsey, Director of Operations

Kavonté Duckett, Director of Alan P. Linton, Jr. Emergency Shelter

Meg Kula, Director of Philanthropy

Daphne Rothstein, Director of Finance

Melanie Williams, Director of Emergency Family Shelter

FISCAL YEAR 2023 BOARD OF DIRECTORS

Ray Barnes, President

Lee Lushbaugh, Vice President

Eric Dallavalle, Treasurer

Nkem Wellington, Secretary

Rev. Eliezer Valentín-Castañón, Immediate Past President

Shelley Aloï

Lynnette Cary, PhD

Justin Coen

Helen Golibart

Rabbi Jordan Hersh

Brian Mack

James Sherwood, PhD

C. Paul Smith



our mission

The Religious Coalition for Emergency Human Needs seeks to prevent and alleviate the effects of poverty on the residents of Frederick County.

CONTACT INFORMATION

27 Degrange Street
Frederick, MD 21701

Phone: 301.631.2670

Fax: 240.215.3019

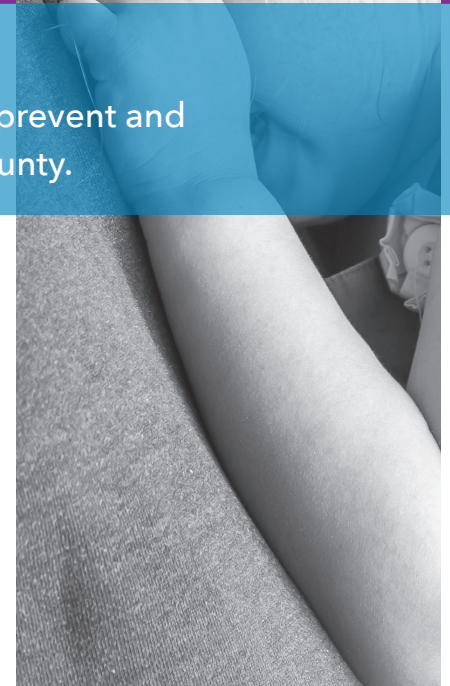
Find out more at www.rcehn.org



[[religiouscoalition](https://www.facebook.com/religiouscoalition)]



[[religious_coalition](https://www.instagram.com/religious_coalition)]



The Religious Coalition is a 501 (c) 3 non-profit organization. A copy of The Religious Coalition's current financial statement is available by writing 27 Degrange Street, Frederick, MD, 21701, or by calling 301-631-2670. Documents and information submitted under the Maryland Solicitations Act are also available, for the cost of postage and copies, from the Maryland Secretary of State, State House, Annapolis, MD, 21401, (410) 974-5534.

FOR FOUR DECADES, dedicated staff and volunteers have established the Coalition as the primary emergency assistance resource in Frederick County, known for our strong and reliable reputation.

As Frederick grows and changes, so does the Coalition. Moving forward, our goal is to expand our services beyond emergency support and establish a continuum of care to ensure people remain housed.

38% OF HOUSEHOLDS

in Maryland are living in poverty, or at risk of living in poverty.

– *Unitedforalice.org and United Ways of Maryland (2023).*



This is What Success Looks Like

A man who lost his job due to COVID-19 received emergency housing services through rapid rehousing for over two years. When he returned to the shelter, his case manager helped him obtain a government phone, Medicaid, and SNAP benefits. He also received assistance with building his resume and finding employment. We were able to get him approved for a permanent supportive housing program successfully, and he was able to transition smoothly.

Join our efforts to address homelessness and our work to keep people in safe and secure housing. Your investment will help provide shelter and the tools to achieve self-sufficiency to people in need.



SUPPORT OUR MISSION BY GIVING TODAY!

Your generosity can help us stabilize the lives of those without homes, and rally against the obstacles to housing. We can ensure that those who want to remain housed in Frederick can do so. For more information about giving opportunities, visit our website, or contact Meg Kula, Director of Philanthropy at 301-631-2670 ext. 117.

THE COALITION IS GRATEFUL FOR SUPPORT FROM THE FAITH-BASED COMMUNITY



The work of The Religious Coalition to provide help for individuals and families in crisis beautifully exemplifies a response to the Christian teaching to 'love your neighbor as yourself.' As followers of Jesus Christ, members of The Church of Jesus Christ of Latter-Day Saints living in the greater Frederick area feel it a great privilege to partner with and support the work of The Religious Coalition in providing support and resources to neighbors who've fallen on hard times. We look forward to future opportunities to serve shoulder-to-shoulder in this critical work."

– Michael Turner, Stake President, The Church of Jesus Christ of Latter-Day Saints of Frederick



THE EMERGENCY FAMILY SHELTER HAS A NEW PASSENGER VAN, thanks to a bequest distribution from the Carole June Benson Estate and a matching grant from the Church of Jesus Christ of Latter-Day Saints. This van will help clients access important services, community resources, doctor appointments, and visits to the grocery store or pharmacy. The Church of Jesus Christ of Latter-Day Saints has been a generous supporter of the Emergency Family Shelter, and we offer our gratitude to them for their continued support.



Leaders and volunteers from our community's congregations have been the backbone of the Coalition since the very beginning. As our programming expands and we continue to grow, we recognize and celebrate the important role the faith-based community has had and continues to have."

– Lynn Cary, Board Member and Outreach Committee Chair



DURING FISCAL YEAR 2023:

8%

of Alan P. Linton, Jr. Emergency Shelter residents were Veterans.

42%

Alan P. Linton, Jr. Emergency Shelter residents were over the age of 51.

77%

of clients at the Alan P. Linton, Jr. Emergency Shelter were men.

3

The average family size of residents at the Emergency Family Shelter.

OUR SERVICES INCLUDE:

EMERGENCY SHELTER PROGRAMS

- » The Alan P. Linton, Jr. Emergency Shelter offers homeless adults a place to sleep, shower, and receive laundry assistance.
- » The Emergency Family Shelter provides temporary housing for families facing homelessness and poverty to maintain family unity and support the transition to permanent housing.

HOMELESS PREVENTION PROGRAMS

- » We provide eligible Frederick County residents who are at risk of becoming homeless or are currently homeless with security deposits.
- » We help clients keep the lights on and the heat running. The Coalition provides financial assistance to help avoid the immediate loss of utilities.
- » We help keep clients facing eviction housed by providing rental assistance.

HEALTHCARE FINANCIAL ASSISTANCE PROGRAMS

- » Our partnerships with local pharmacies offer Healthcare Financial Assistance for life-sustaining medication costs.
- » We offer emergency dental assistance to individuals 51 and over, for a range of procedures, from simple fillings and extractions to more complex treatments like root canals and dentures.

CASE MANAGEMENT SUPPORT

- » Our compassionate and professional staff helps support clients as they develop a plan and connect clients with important resources and services to help them achieve their goals.

This is What Success Looks Like

A family residing at the Emergency Family Shelter did not qualify for a lot of services. Mom got a job and was on her way to securing stable housing. However, her biggest accomplishment was establishing her own bank account and managing her own money. She had never done that before. Our staff helped by teaching the client budgeting skills.

The Coalition is here to ensure that individuals and families facing financial hardship remain housed or can return to stable housing and self-sufficiency.

ANNUAL DONOR impact

report

FISCAL YEAR 2023

EMERGENCY SHELTER

Your gift provided clients with a safe place to sleep and receive access to case management services.

ALAN P. LINTON, JR EMERGENCY SHELTER BY THE NUMBERS

343

Number of clients APL clients served

7

Average number of days in the shelter

A family came into our family shelter after nearly a year of residing in a tent or hotel. All members of the family are deaf, except for one child, the youngest, who rarely speaks. During their first month with us, a deeply touching and significant moment occurred. The youngest child, who had been mostly silent, told a case manager he "wanted to go home." She asked if he meant the shelter and he said yes, he wanted to go there. To go "home." This was not only the first the case manager had heard the child speak, but with the desire to return "home" to the shelter.

It's touching that despite the challenges they faced, the child and family found a sense of home in the shelter, where they felt safe. It's heartening to see how providing stability and a secure place made such a difference for this family, empowering the youngest to find his voice and express his needs.

EMERGENCY FAMILY SHELTER BY THE NUMBERS

39

Number of Families Served in the Emergency Family Shelter

35%

of Kids Under the Age of 5

80

Number of Kids Under the Age of 18

75 DAYS

Average Length of Stay in the Emergency Family Shelter

HOMELESS PREVENTION

Your gift helps keep people housed by providing financial assistance for security deposits, energy bills, and emergency rental assistance.

HOMELESS PREVENTION BY THE NUMBERS

120

Households Received Utility Financial Assistance

\$714

Average Energy Financial Assistance Provided Per Household

950

Households Received Emergency Rental Assistance

\$4,363

Average Emergency Rental Assistance Provided Per Household

142

Households Received Security Deposits

\$928

Average Security Deposit Provided Per Household



I came to The Religious Coalition during one of the most trying times in my life and have been blessed to meet some of the most gracious and caring people who went above and beyond to try and help me with my owed rent and would advocate for me in regards to my rights when my landlord would push for eviction. The attitude displayed by staff was amazing and I felt the same caring and empathetic disposition from all of the people that work at The Religious Coalition office."

- Client that received Emergency Rental Assistance

Your gift provided families with stability and security during a time of crisis

FINANCIAL ASSISTANCE FOR PRESCRIPTIONS AND EMERGENCY DENTAL PROCEDURES

Your gift provided access to life-sustaining prescriptions and emergency dental procedures for people 55 and over.

FINANCIAL ASSISTANCE FOR PRESCRIPTIONS AND EMERGENCY DENTAL PROCEDURES

23

Clients Over the Age of 55
Received Financial Assistance
For Dental Procedures

90

Clients Received Financial
Assistance for Prescriptions

Good dental health translates to good health, overall. That's why the Coalition provides emergency dental assistance for simple dental procedures, such as tooth extraction or fillings.

Local pharmacies, such as Whitesells, partner with us to ensure our clients get the life-saving prescriptions like Insulin.



**THE RELIGIOUS
COALITION**

For Emergency Human Needs

www.rcehn.org

THE RELIGIOUS COALITION: THE IMPACT OF YOUR GIFT



THE IMPACT OF YOUR GIFT BY THE NUMBERS

86 cents

of every dollar went to provide direct services to clients

FISCAL YEAR 2023 DONORS:

1,076

DOLLARS RECEIVED IN FISCAL YEAR 2023:

\$1,033,070.74

The generosity in our community makes our work possible. Thank you!

THE COALITION'S STRATEGIC INITIATIVES

The Coalition's Staff and Board of Directors have identified four strategic areas to enhance the Coalition's ability to provide life-transforming services to our clients. The following are the summarized goals and actions we're undertaking to continue being the resource for Frederick residents in need.



Case Mangers Ellen, Danayris, LaTasha, and Mariah

Case Mangers provide guidance and support to our clients as they navigate a path beyond homelessness and poverty.

Strengthen internal operations to guarantee dependable and sustainable funding, and plan for an uncertain future.

This is a mainstay goal for the Coalition. It's imperative that we continue executing at a high level and to do that we must have the right people in the right places. We've added a key player to the team in the last year, welcoming Daphne Rothstein as the Director of Finance. With enhanced financial controls in place, we are now working to raise the needed capital to work towards our next evolution.

Getting our Board members into action.

The Coalition's Board is vital to both the current and future operations. Although a Board usually provides oversight, we want them to understand not only the Coalition's operations but how we operate within the service provider landscape. We've tasked Board members to get involved at a granular level and to provide the needed connectivity to ideas and additional resources.

How do we make the most impact on homelessness and insufficient housing in Frederick?

This has been the Coalition's primary focus for the last 3 years and remains a substantial concern for us. The housing crisis is here and the people we serve experience this every day. The Coalition maintains a strong voice for the human right of housing. We continue to advocate and brainstorm with partner providers, and our local and state governments to address this evolving issue. We're soon to launch a mini-housing-specific fundraising campaign to continue addressing this very issue.

How do we engage and excite the community in our mission?

2024 holds an exciting change for the Coalition. With the spring comes the flowering of a reinvigorated organization. New growth and refreshed energy will be on display throughout the new year. We're excited to take you on that journey and look forward to our next evolution. Stay tuned for April!!



Frederick County has experienced significant growth in recent years. The Coalition is dedicated to fulfilling the rising demand for our services. Our strategic plan offers a purposeful roadmap to guide our efforts."

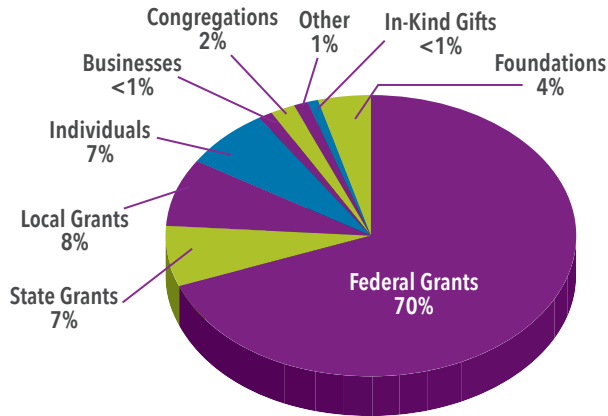
—Ray Barnes, President,
Board of Directors



Your gift provided clients with access to critical case management services.

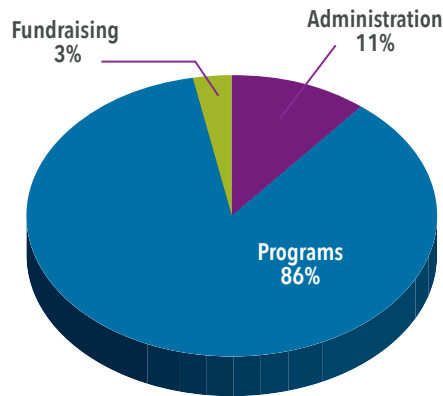
A woman arrived at the shelter after experiencing difficult times and enduring several traumatic events. With encouragement and consistency, the case manager and the client worked together to achieve the client's goals. She was successfully connected and approved for a government phone, Medicaid, and SNAP benefits. She received assistance in scheduling doctor and dental appointments. With employment assistance, she was able to secure a job.

2023 INCOME



Individuals	7.0%	512,692.84
Businesses & Organizations	<1.0%	75,177.24
Congregations	2.0%	137,515.04
Other	1.0%	31,538.00
In-Kind Gifts	<1.0%	15,203.96
Foundations	4.0%	260,943.66
Federal Grants	70.0%	4,900,000.00
State Grants	7.0%	520,000.00
Local Grants	8.0%	551,000.00
Total Revenue		\$7,004,070.74

2023 EXPENSES



Fundraising	3%	\$198,428.00
Administration	11%	\$785,587.00
Programs	86%	\$6,210,095.00
Total Expenses		\$7,194,110.00

Note: This financial information is unaudited.

FISCAL YEAR 2023 DONORS



The compass rose is a symbol of navigation that always points North. During the renovation of an 1890's farmhouse purchased by the Coalition to serve as a new Emergency Family Shelter, construction crews discovered a compass rose inlaid in marble in the front of the house. Like a compass rose, the Coalition guides our clients North by providing them with the necessary tools and support to help them achieve permanent housing and self-sufficiency.

Individual donors who contribute \$1,000 or more during the fiscal year (October 1, 2022 - September 30, 2023) are recognized as inaugural members of the Compass Rose Society. We extend our heartfelt gratitude to members for their generous contributions and for supporting us in our daily fight to help clients retain or regain housing.

FOUNDING MEMBERS OF THE COMPASS ROSE GIVING SOCIETY:

North Star (Gifts of \$1,000 and above)

Julane and Art Anderson
Brenda Benna
Susan Deavours
Kimball Firestone
Carmen Hernandez and Manuel Casiano
Sharon and Patrick Linton
Erika and Philip Rauh
Susan and P. Gregory Rausch
Daniel Sipe
Louise Webb and William Browning

Path Makers (Gifts of \$5,000 - \$9,999)

Pamala and Steven Barger
Gayle and David Bromberg
Deborah and Joseph Brown
Betsy and Michael Day
George Delaplaine
Margaret Gerstner
Patricia and Jeffrey Hurwitz
Lou Ann and Lee Lushbaugh
Kathleen and Timothy Moore
Karen Mosher
Mary and Stephen Moss

Barbara and Harold Mosser
Jim Plamondon
Pete Plamondon Jr.
Sandy and Bruce Robertson
Lisa and Dan Schiffman
Louise Talley
Karen and David Thomassen
John Tucker
Kirsten and Michael Vieira

Compass Rose Navigators (Gifts of \$1,000 - \$4,999):

Elinor Abrell
Anonymous
Karen and Joseph Ashwal
Janet and Raymond Barnes
Sue and Richard Basford
Kathy and Harold Blackstone
Janet and Carl Bowen
Marsha and Charles Bowers
Elizabeth Brady
Elizabeth and Seth Brohawn
Colleen Bugler
Maxine Casey
Sarah Cleaver
Mary Coan and Gregory Paulsen
Robin and David Cooney
Patricia Curchin
Bradley Curtis
Elizabeth and Todd Davis

Lucille Davis
Charles Delauter
Karen and Stephen Dill
Thomas Dilling
Linda and Thomas Dorworth
Kristin and Joseph Dremock
Ronald Dudley
Nathalie and William Duncan
Helen and Artie Esworthy
Darci and Steve Feifer
Lindy Fetter
Janet and Mark Flanagan
Nancy and Charles Foltyn
Sandra Fout
Ruth Fox
Julie and Dave Fulton
Carolyn Funke
Wanda and James Hartley
Donna and Gregory Hill
Nicole and Justin Holler
Nancy and William Holmes
Phyllis Hoyer
Sherry and James Hubbard
Sharon Isaacs
Wayne Kaiser
TemiTayo Kasali
Lori and Peter Keifer
Paula Kelly
Barbara Kershner Daniel and Kenneth Daniel
Susan and Thomas Kloc

Jennifer Koontz
Sharon and Daniel Kuebbing
Megan Kula and Curran Johnson
Anna Johnson-Winegar and Lucien Winegar
Elizabeth and Patrick Kurpius
Alice and Bruce Larson
Marilyn and Richard Ludwick
Alison Lynch
Suzanne and Bryan Mack
Kimberly and Thomas Malone
Pauline Manalo
Ingrid and Richard Manfredo
Janet and Fred Manning
Ryan McCulley
Ella McNeil
Mary Ellen and John Menke
Melvin Mercier
Theresa Michel
Wendy Miller
Cathy and Joseph Mitchell
Susan Moody
Linda Moran
Kristine Nixon
Addie Null
Margaret Nusbaum
Caroline Price
Bryce Redington

Leigh and Steven Reichard
Robin and Brian Rippeon
Leeann Rock and Brian Anderson
Jeanne and Craig Russell
Barry and Tod Salisbury
David Sensenig
Delores Shackelford
Liz and Eugene Shaulis
Rebecca and John Shillingburg
Carolyn and George Smith
Thomas Spano
Ellan and Charles Spring
Kathryn and Harlan Stansbery
Charles Stouffer
Vicki and Arthur Strong
Adam Stull
Evelyn and Charles Summers
Kimberly and John Teunis
Carol and Charles Tilford
Lila Turner
Maribeth Visco and Karl Berger
Frances and Frederick Wenner
David White
Nancy Wilson
Marlene and Michael Young
Krista and Marc Zodet

INDIVIDUAL DONORS

Gifts of \$500-\$999

Mary Ann and Anthony Aellen
Chris Arey
Scott Austin
Reah and Richard Autz
Mary Lou and Gerald Blessing
Janet Capra
Ricey Clapp
Ashley and Justin Coen
Dorothy Doll
Kathleen and Robert Dollar
Margarete and Neil Donnelly
Lisa and David Drewry
Patricia Elliott
Susan and Charles Engler
Larry Eubanks
Diane and Thomas Evich
Kate Frick
Cathy and Lewis Gannon
Vicki and Scott George
Doris and Robert Grossnickle
Gloria and David Grove
Virginia Hall
Charlotte and Russell Hanson
Robert Harshman
Nikolas Henle
Sarah Hoffman
Adrianna and Kevin Hohl
Autumn Hollis
Cindy and Frederick Houdeshell
Patricia and Stuart Hough
Carole Howard
Lois Jarman
Jack Keller
Janet and William Kopp
Carolyn and Timothy Lee
Deborah and Lee Longmire
Maria Lopez
Steve Lopez
Alyce and Ted Luck
Elaine Luttrell
Brian Markey
Robert McElwain
Tracey and Terrence McPherson
Miriam and Vaughn Meglan
Valri Monroe
William Montgomery
Robert Morcock
Sharon and Robert Neale

Kathryn Nicodemus
Paula and Robert Niederberger
Beth O'Malley and Randell Young
Philip Olsen
Lois Pacheco
Juan Pacheco
Trinity Patterson-Dorsey
Carole and Attilio Pecora
Sarah and Greg Petermann
Anne Nelson and R Pieper
Karen and Anthony Poffenberger
Jean Reeder
Carol and Ricardo Roache
Emily Roy
Erica and Patrick Saccoia
Carmen and James Schmersahl
Edward Schoder
Ethel and Frank Scotto
Janice and Charles Seiser
Sue and Robert Sheffler
Vicki Sherman
Shirley Sixma
Gil Slacum
John Slough
Terry and C. Paul Smith
Joanne and Jim Spiller
Victoria Starnes
Richard Sternes
Linda Stone
Vicki and Arthur Strong
Nancy and Philip Stultz
Susan and Roger Sullivan
Diana Sung
Veronika Szalai and David Stewart
John Talley
Michele and Mark Tartaglia
Rebecca and Timothy Taylor
Ronald Terbush
Judith and Lawrence Timko
Rachel and Bob Toft
Sherrie and Edward van den Heuvel
Dorothy and Kenneth Weddle
Nancy Williford
Dennis Winston
George Zinkhan

Gifts of \$100 - \$499

Joanne Aellen
Brenda and Cletus Ahalt
Bruce Albright
Asmamaw Altaseb
Chester Anderson
Patricia and Robert Andrew
Gerardo Araiza
Dorinne and Richard Armstrong
Elizabeth Arnone
Austin Aubinoe
Roslin and Dennis Babb
Janice Badoud
Susan and Todd Baer
Danielle and Doug Bailey
James Baldree
Nikki Bamonti
Alec Barlow
Laurel and Darrell Batson
Barbara Beach
Craig Bedard
Connie and Gary Bell
Stacy and John Benner
Susan Bennett
Amy Benton and Tom Chase
David Betzner
Carolyn and Brian Biggins
Paula and Steve Biggs
Kathleen Bonnette
Toni and John Border
Virginia and Jana Brace
Gail and Michael Bradley
Kristin Brandenburg
Virginia and Kenneth Brennfleck
Diane Brown
Helen and Ralph Burdette
Scottie and Steven Burdette
Ellis Burruss
Bonnie Butler
David Caffee
Constance Caffes
Dean Calcagni
Jean Callahan
David Carmack
Roger Carrier
Lynette and Howard Cary
Patricia Cash
Susan Chaitovitz
Carol and Greg Chatfield
Catherine and Charles Ciesinski

Nancy Clark
Jayme and Raymond Cline
Janet and Don Cline
Joan Cmarik
Sandra Coblentz
Lisa Coblentz
Ashley and Justin Coen
Nancy Cogan
Gloria Coleman
Barbara Colunga
Donna and Robert Cooney
Joan and Donald Cornell
Lavenia and Gaylon Cornell
Jeffrey Cosgrove
Lois and Ferdinando Covati
Lorna Covert
Patricia Cronin and Andrew Celmer
Evelyne Crooks
Janet and John Cugini
Elise Culler
Mary Curtis
Alma Dade
Janis and Raymond Dagger
Angie and Eric Dallavalle
Richard Dant
Theresa Dardanell
Eleanor and Kevin Day
Kimberly Dean
Linda DeLauder and William Steigelmann
Pepper and Dan Delauter
Diane and John Derr
Diane and Michael Devlin
Agnes Diaz
Kay Dicharry
Elza Dima
Elke and Steven Dorr
Karen and Paul Dotterer
Pamela and Dennis Dove
Mary Dove
Judy Draper
Terri and Robert Driver-Bishop
Thomas Durocher
Michael Dutrow
Dorothy Early
Eileen Ebert
Michael Eissenstat
Hassan El-Torgoman
Vincent Elish
Marianne and Martin Erlichman

Marie and Louis Eskuchen
Sharon Evans
Judith Eyler
Robert Failor
Linda and Richard Fairfax
Barbara Farra
Janice and Robert Felter
Linda and James Ferrant
Margaret Fessler
Neitzu Feustel
Katie and John Fieseler
Jean Fish
Draginja and Donald Fish
Sharon Fitzpatrick
Gerald Flood
Rayfield Foster
M. Freysz
Peggy and Denton Garst
Maria Gaspar
Desta Gavilan-Harvey and Dalton Harvey
Ruthanna Geisbert
James George
Sara and Mark Gibson
Nancy Gieser
Caroline Goell
Dorothy and Thomas Golden
Anne and Ronald Golden
Fonda and Jonathan Gormer
Mary and Robert Gosline
Nancy and David Graham
Nancy and Richard Graham
Margaret and Katherine Grandine
David Graves
Eileen Greve
Jill and Douglas Griffith
Elizabeth Grossnickle
Claude Grubbs
Carol Guth
Harry Haines
Susan and Gary Haines
Brenda and Patrick Hammett
LaRue and Gerald Hammond
Elaine Harp
Teresa Harris
Donna and Alfred Harris
Shirley and Benjamin Harris
Beverly Hart
Paulette Harvey
Tim Harwood, Jr.
Margaret and Edward Haser

Wendy and Aaron Hastie
Naomi and Paul Hemme
Joan and D. Hunt
Hendrickson
Dave and Pat Herber
Susan Heslin
Eileen and James Hickey
Matthew Hillard
Belva Hoffman
Diane Holter
Doug Hooper
Robert Hooper
Cynthia and David Hostetter
Julie and Hardy Howell
Michael and Brenda Hoyle
Sandra Huff
Zoanna and Ronald Huffer
Dorothy Hutchinson
Rogina Isaacs
Derek Johns
Thomas Johns
Sally Jones and Robert Rooy
Carolyn Judd
Susan and Ronald
Kaltenbaugh
Julie Kaus
Eileen and Donald Keller
Amy Jo and Charles Keller
Ricarda Kelly-Walrond
Karin and William Key
Julie and Thomas King
Corey Kinna
Carole Kirby
Lucia and Chris Kline
Richard Knight
John Knudson
Elizabeth and Rodney
Koozmin
Suzanne Koppanen
Janet and Douglas Kuhns
Jacob Lambert
Sandra and John Landbeck
JoAnn Lindgren
Daryl Lindstrom
Catherine and Conrad Link
Linda Linkins
Barbara Linthicum
Lori Linthicum
Alice Linton
Barbara Lofts
Suzanne and Jesse Love
Edith Loveland
Roland Luhn

Sharon and Jan Manning
Jeanette Manning
George Martin
Douglas Martin
Cynthia Mason and Michael
Leiter
Roberta and Hoyt Matthai
Joan Matthews
Mary Ann and Edmund
Mauzy
Maureen and Robert McCabe
Beverly and Stephen
McCardle
Judith McFadden
Judy and Dennis McMahon
Barbara and Paul McNickle
Anna and Michael Middeke
Elizabeth and Jonathan
Midgette
Patrick Miglio
Elizabeth Molesworth
Magda Morales and
Eliezer Valentin-Castañón
Mary and James Morgan
Betsy and Ken Morrow
Sandra and Dennis Murphy
Kathryn and Paul Murray
Rose Myers
Martha and Paul Nelson
Linda and Rowland New
Laura and Stephen Nibbs
Lucinda and Robert Noland
Kara and Thomas Norman
Charlotte Nusbaum
Thomas O'Keefe
Doug O'Rear
Theresa O'Sullivan
Catherine and William
O'Toole
Joan Ogaitis
Sharon and Terry Oland
Linda and Samuel Oliver
Sarah and James Olson
Stephen Orr III
Janette and Joseph Ozag
Mary Palkovic
Nancy and Douglas Parker
Michael Pasquerette
Priscilla Pass
Mary and George Payne
Eunice and Raymond Pearce
Eileen and James Pederson
Gregg Petermann

JoAnn and Barry Poffinberger
Elizabeth and Thomas Pollack
Blanca and Steve Poteat
Carole Price
Charles Raeihle
Elizabeth Randall
Jean Reeder
Elizabeth and William
Reichard
Mary Ellen Rhoderick
Eugenia and James Rhoten
Susan Rivers
Allison Rizzo
Veronica Roberts
Janet and George Roberts
Mary Jane Roop
Allison Rota
James Rudy
Audrienne and Lester Runkles
Wiley Rutledge
Michael Ryder
Paula and Robert Saal
Dedra Salitrik
Nancy Saltzman
Freda and Lawrence Sames
Jessee and Toni Scarborough
Janice Schlepp
James Schneck
Kathy and Thomas Schultze
John Schwalm
Phyllis and Gary Schwartz
James Scott
Wanda Scott
Jeannie Seal
Debra and James Sherwood
Frances and Stuart Shifrin
Margaret and Stephen
Shumate
Janet and Stephen Silvius
Barbara and Robert Simpson
Margy and Curran Simpson
Jane Skelly
Gail and John Slezak
Irene Smith
Betty and Donald Smith
Kathleen and Teri Smith-
Jones
Carol Snyder
Carol and Donald Solich
Lynn and Bruce Spates
Jane and Lewis Staley
Angela and David Stalnaker
Dawn Stein

Gerry Stephens
Rosanne Stephens
Calvin Steward
Carole Stitely
Betty and Robert Stone
Bonnie Strine
Annette and Arthur Strong
Paula Stull
John Sullivan
Jane Talarico and Michael
Paskowsky
Mary and Richard Terrell
Sara Thomas
Linda and Richard Thompson
Carolyn Thompson
Leslie and Robert Thornton
Mary Tousignaut
Hope Trawick
Sandra and Michael Trout
Theresa Trybus
Lois and Wanda Tyson
Wanet and Raymond Tyson
Patti Vanhall
Janet and Charles Virtue
Madonna and John Vitarello
Vivian Votipka
Pamela and David Wachter
Mary and Mark Wakefield
David Wallace
Christopher Ward
Dennis Webb
Nkem Wellington
Denise and Paul West
Doris and Frank White
Nancy and Glenn Wiggs
David Wilkinson
Colleen and Douglas Williams
Jill Williams
Jenny and Thomas Williams
Marguerite and Jeffrey
Wilson
Beverly Winegardner
Bernardina and Wayne Wise
Joy and Stephen Wise
Harold Wright
Emogene and Donald Wyand
Rose Young
Anne Young
Diane and John Younkins
Celia and Nelson Zahler
Norlene and Sudad Zanganah
Denise Zigler

BUSINESSES AND CORPORATIONS

Gifts of \$5,000 and Above

First Energy
Republic National
Distributing Company
Woodsboro Bank

Gifts of \$1,000 - \$4,999

Abeles Flurie Wealth
Management of Wells Fargo
Advisors
AstraZeneca
FH Properties
GVCS Inc.
Hershey Creamery Company
LPL Financial
Madden Holding Co LLC
McGriff Insurance Services
Middlepoint Properties LLC
Morgan Stanley LLC
New Design LLLP
Patriot Federal Credit Union
Riverside Liquors
Truist
Tumy Technology Inc.
Yankee Land LLC

Gifts of \$500 - \$999

ATP "Wellbeing" Consultants
LLC
Blackfoot Productions
Blue Ridge Risk Partners LLC
Booz Allen Hamilton
Brethren Mutual Insurance
Company
Common Market
Gladchuck Brothers Inc.
Growth and Income Capital
Inc.
James Mettee Plumbing &
Heating
Law Offices of Michael
Delauter
Miles & Stockbridge P.C.
Radcliffe Realty Group
Shafer, Troxell & Howe Inc
Sky's The Limit

Gifts of \$100 - \$499

Middletown Valley Bank
Phoenix Noise & Vibration LLC
Robinson Air Conditioning
and Heating
The Giving Block
Valley Graphic Services Inc.
Wantz Distributors

FAITH BASED CONGREGATIONS

Gifts of \$5,000 and Above

Calvary United Methodist Church
 Evangelical Reformed United Church of Christ
 Frederick Christian Fellowship
 Frederick Presbyterian Church
 Holy Family Catholic Community
 Middletown United Methodist Church
 St. Peter's Catholic Church
 The Church of Jesus Christ of Latter-Day Saints

Gifts of \$1,000 - \$4,999

All Saints' Episcopal Church
 Brook Hill United Methodist Church
 Buckeystown United Methodist Church
 Calvary Chapel Frederick
 Church of The Transfiguration
 El Shaddai Congregation
 Evangelical Lutheran Church
 Faith Baptist Church
 Faith Reformed Presbyterian Church
 First Missionary Baptist Church
 Good Shepherd Evangelical Lutheran Church

Grace Community Church
 Harvest Christian Fellowship
 Locust Grove Church of the Brethren
 Mount Tabor Lutheran Church
 Society of St. Vincent de Paul
 St. Ignatius Loyola Catholic Church
 St. John The Evangelist Catholic Church
 St. Joseph Catholic Church-Buckeystown
 St. Katharine Drexel Church
 St. Timothy Catholic Church
 Thurmont Church of the Brethren
 Zion Lutheran Church

Gifts of \$500-\$999

Deaf Calvary Church
 Dorsey Christian Chapel
 Edgewood Church of God
 Frederick Church of the Brethren
 Grace United Church of Christ
 Graceham Moravian Church
 Grossnickle Church of the Brethren
 Key City Church
 New Design Church of the Christian and Missionary Alliance
 New Life Church

Providence United Methodist Church
 Saint Francis of Assisi - Saint Mary
 Saint Mary's Chapter of All Saints Church
 Simpson Christian Community Church
 St. Paul's Lutheran Church - Jefferson
 Unitarian Universalist Congregation
 United Methodist Women of Calvary United Methodist Church

Gifts of \$100 - \$499

Adamstown Community Church
 Bethel Worship Center
 Christ Reformed United Church of Christ
 Church of Pentecost USA
 Church World Service
 Faith United Church of Christ
 Frederick Friends Meeting
 Glade Valley Church of the Brethren
 Harmony Church of the Brethren
 Ijamsville United Methodist Church
 Lewistown United Methodist Church
 Linganore United Methodist Church

Mt. Zion A M E Church
 North Valley Church
 Prospect United Methodist Church
 Salem United Methodist Church--Myersville
 St. Johns Lutheran Church
 St. Paul A M E Church
 St. Paul's Evangelical Lutheran Church Walkersville
 Summit Trace Church
 Walkersville United Methodist Church
 Wayman A M E Church

FOUNDATIONS AND CHARITABLE ORGANIZATIONS

Bright Funds Foundation
 Buckingham Choice Residents Association
 Carole June Benson Estate
 Chi Theta Omega Chapter of Alpha Kappa Alpha Society
 Clover Hill Civic Association
 Creating Healthier Communities
 Delaplaine Foundation Inc
 Donald Lewis Community Impact Fund
 Fidelity Charitable Gift Fund
 Frederick County Public Schools
 Give Lively Foundation Inc
 Jacques DeMolay Commandery No. 4
 Kemmo and Nguetack Foundation
 Kiwanis Club of Frederick
 Knights of Columbus Council #11703
 Laughlin Family Foundation, a component of The Community Foundation of Frederick County
 Rotary Club of Carroll Creek
 Rotary Club of Frederick
 Sons of Amvets Squadron #9
 Sons of Norway
 The Community Foundation of Frederick County
 The G. Frank Thomas Foundation Inc
 The Joseph D Baker Fund Inc
 The Trail-Mathias-Michel Fund, a component of The Community Foundation of Frederick County
 United Way of Frederick County
 United Way of Greater Atlanta
 William E. Cross Foundation Inc
 Women of the Moose - Chapter #347
 Women's Giving Circle of Frederick County, a component of The Community Foundation of Frederick County

This list of donors reflects gifts received between October 1, 2022 - September 30, 2023. We have made every effort to ensure the accuracy of the names listed. Please notify us of any errors or omissions.

YES, I WANT TO INVEST IN MY COMMUNITY WITH MY GIFT OF \$ _____

PLEASE USE MY GIFT  **WHERE NEED IS GREATEST** **ALAN P. LINTON, JR. EMERGENCY SHELTER**
 EMERGENCY FAMILY SHELTER **HOMELESS PREVENTION SERVICES**

Name _____

Address _____

City _____ State _____ Zip _____

Phone _____ Email _____

PAYMENT METHOD

Check Enclosed (please make payable to The Religious Coalition)

Please charge \$ _____ to Visa Mastercard American Express Discover

Credit Card # _____ Exp. Date _____ Security Code _____

Signature _____

Please charge my credit card monthly on the 1st of each month 15th of each month I am interested in talking to staff about planned giving opportunities.



THE RELIGIOUS COALITION

For Emergency Human Needs

27 Degrange Street
Frederick, MD 21701

Non-Profit Org.
U.S. Postage
PAID
Frederick, MD 21701
Permit No. 559



our mission

The Religious Coalition for
Emergency Human Needs seeks
to prevent and alleviate the effects
of poverty on the residents of
Frederick County.

NEED HELP?

IF YOU OR SOMEONE YOU KNOW CAN BENEFIT FROM OUR SERVICES,
CALL US AT 301-631-2670 OR VISIT OUR WEBSITE WWW.RCEHN.ORG.